

# soundcare<sup>®</sup> SuperSpikes<sup>™</sup> for SuperSound



## *The best HiFi upgrade*

- *Improved Low Frequency Control*
- *Improved Soundstage and Transparency*
- *Reduced Overall Distortion*
- *Maximum Protection for Surfaces*
- *Less Disturbance for Neighbours*



## What is Soundcare® SuperSpike?

The Soundcare® SuperSpike is an all-in-one spike foot for Hi-Fi and home theater equipments. This unique construction eliminates the most common problem experienced when using a conventional spike: damaged surfaces. The construction is based on a high-quality spike fitted with a custom designed plate, all integrated in a plastic housing. This allows the user to move the equipment without scratching or scarring the surface.

## Why use Soundcare® SuperSpikes?

When the weight of your Hi-Fi equipment is concentrated onto a small area, the weight per square unit area increases enormously, providing better contact with the surface on which the unit stands. This results in an overall improved sound stage and increased control in the lower frequency register. Spikes will also reduce disturbing vibrations and prevent low frequency noise from transmitting to other rooms. A Soundcare® SuperSpike loaded with 12,5 kg produces a pressure of more than 6,200 kg pr. sq. cm.

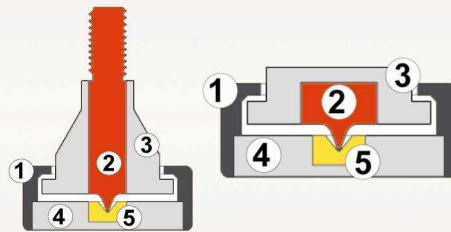
## The Soundcare® SuperSpike is not just another spike!

To achieve the best overall sound stage, lowest distortion level and best low frequency control possible, a unique combination of materials has been selected during several listening tests and measurements. Soundcare® SuperSpikes have been tested by an independent test panel of music lovers, audiophiles, musicians and engineers with stunning results. The improvement of the overall soundstage is outstanding. Soundcare SuperSpikes have been proven to be extremely effective on all Hi-Fi equipments.

## How it is designed.

The Soundcare® SuperSpike is an assembly of:

- An outer, sturdy, clean looking housing (1) of ABS plastic (standard version) or Polycarbonate (High-End version).
- Spike made of first class case hardened steel (2).
- Zinc casing (3) that reduces resonances in the spike and is specially designed to hold the plastic housing when the equipment is lifted.
- Zinc disc (4) with mild steel insert (5).
- Self adhesive felt pad made from 1.25 mm quality felt with permanent fairly high coatweight tape.
- Double coated tape, 3M 9573 high performance permanent tape (the self adhesive version and the SuperSpiked foot).
- Lock nut. (only the threaded versions).



All Soundcare® spikes use a spike with a rounded tip (0,5 mm in diameter) standing in a crater with a flat bottom. In this way we get a very small contact area combined with enormous strength.



One spike handles up to 400 kgs.

10 year warranty on all products.

## For all types of equipment.

Both the standard models and the High-End models are available in four threaded versions, M6, M8, 1/4 inch and 5/16 inch and in a self adhesive version.

## The different models:

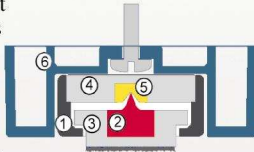
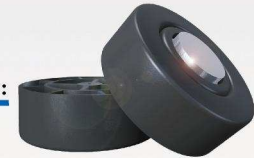
### The Soundcare® SuperSpike standard models:

The standard Super-Spike is a low cost upgrade that will make a major difference to the sound quality of any system. The standard SuperSpike is made in shiny and black finish.



### The Soundcare® SuperSpiked foot for electronics:

Soundcare® Super-Spiked foot is an all-in-one spike foot for Hi-Fi electronics. The construction is based on a high-quality self adhesive SuperSpike and an ABS foot (6) that makes the SuperSpike look very like an ordinary foot for electronics. This allows the user to move the Hi-Fi equipment without scratching or scarring the surface.



### The Soundcare® SuperSpike High-End models:

The High-End SuperSpike is hand made in Norway. The zinc parts are covered with a gold layer. The zinc casing is polished by hand, then covered with layers of copper, chrome and gold. The plastic housing is made of clear polycarbonate.



## Titanium models:

### The Soundcare® SuperSpike High-End TITANIUM model:

The construction is based on a high quality spike made of TITANIUM grade 5 (extremely hard alloy made for the space industry) fitted with a custom designed base plate made of TITANIUM grade 2 (pure TITANIUM), all integrated in a polycarbonate housing.



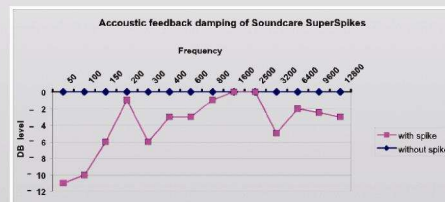
### The Soundcare® SuperSpike High-End extreme TITANIUM model:

For Soundcare® SuperSpikes TITANIUM only the best materials have been chosen to make the best and most exclusive spike on the market. All parts are produced with very small tolerances. This in addition to using grade 5 TITANIUM in the spike (a very difficult alloy to make) we have made the ultimate spike for the most exclusive equipments.



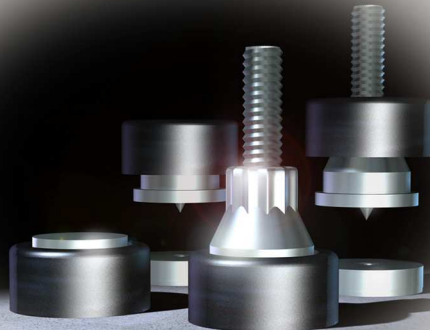
## Measurements:

A calibrated loudspeaker is fed with a sinus wave on each frequency level. The loudspeaker is placed upon a calibrated pressure sensitive microphone. For each frequency the signal is fed through the loudspeaker and the output level is adjusted to specific level which is referred to as 0 db. At 50Hz, the most important frequency, the damping is 11 db.





**"...Definitely recommended"  
HiFi Choice**



**"... Marvellous... The Soundcare products are just about the only worthwhile and affordable game in town ."**

**Pete Christie – HiFi+ Magazine**



**"Conclusions:  
...I can't help but say these are,  
in my humble opinion, the best  
spikes around, bar none."**

**tnt-audio**

*Designed and manufactured by*

**soundcare<sup>®</sup> as**

*Skårsletta 50, P O Box 383,*

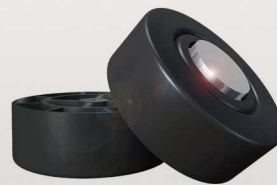
*N-1471 Lørenskog, Norway.*

*Fax: +47 67 91 96 51*

*E-mail: [spike@soundcare.no](mailto:spike@soundcare.no)*

*<http://www.soundcare.no>*

*<http://www.superspikes.com>*



Importer / retailer:

*SuperSpike for SuperSound™ is trademark of Soundcare®.  
Soundcare® SuperSpike™ is patented world wide.*